

SONIFEX

S1 Radio Broadcast On-Air Mixer

2014-15
Catalogue





S1 Radio Broadcast On-Air Mixer

The small radio mixer that's big on features.

The S1 has an amazing feature set and offers a proper broadcast solution to community, educational and student radio stations that need a versatile, reliable radio broadcast mixer. It has a 'no compromise on quality' approach with excellent mic amps, comprehensive facilities & simple, reliable operation.



S1 Digital/Analogue Radio Broadcast Mixer.



Category: Radio Broadcast Mixing Consoles - S1 Radio Broadcast Mixer.

Product Function: 9 Channel analogue fixed format on-air broadcast mixer.

Typical Applications: Community, student, hospital and small scale radio

broadcast mixer, secondary or backup on-air mixer.

Features:

- High performance, ultra-reliable on-air radio mixer.
- Low cost and easy to use.
- Small footprint, flush-mounting or rack-mounting.
- Analogue & digital inputs & outputs.
- Main stereo output bus plus 2 Aux output buses, pre or post fader

selectable.

- Rotating rear panel for ease of installation.
- Integrated power supply.
- Remote outputs per channel.
- Fader start of ancilliary equipment such as CD players.
- Programmable general purpose I/O.
- Monitor muting on mic live.
- Mic-live/on-air sign switching.
- Monitor outputs for presenter & guest

headphones, & speakers.

- Bright LED meter display PPM/VU selectable with separate meterbridge output.
- 100mm ALPS long-throw faders with control via VCAs.
- Separate telco & stereo cleanfeed o/ps for use with a telephone hybrid & codec respectively.
- Advanced automation facilities.
- Remote control via free SCI software.



S1 Digital/Analogue Radio Broadcast Mixer, Rear View.

The Sonifex S1 mixer is a high performance compact, low cost, fixed format mixing console designed for on-air radio use. It can be fitted flush into a desktop or can be rack-mounted by the addition of optional rack ears. The rear connectivity panel can be rotated 90° onto the base of the unit providing easier connection to the unit when it is rack-mounted. It has an integral universal switch mode power supply, which uses an IEC inlet.

It maintains the same front panel ease of use found on the Sonifex S2 whilst providing advanced automated features not seen on any other product currently available on the market.

The console consists of ten input channels:

- 2 x mono XLR mic/mono XLR line inputs.
- 1 x mono XLR mic/mono XLR telco input.
- 2 x mono XLR mic/mono XLR line inputs/ stereo ¼" jack unbalanced line input.

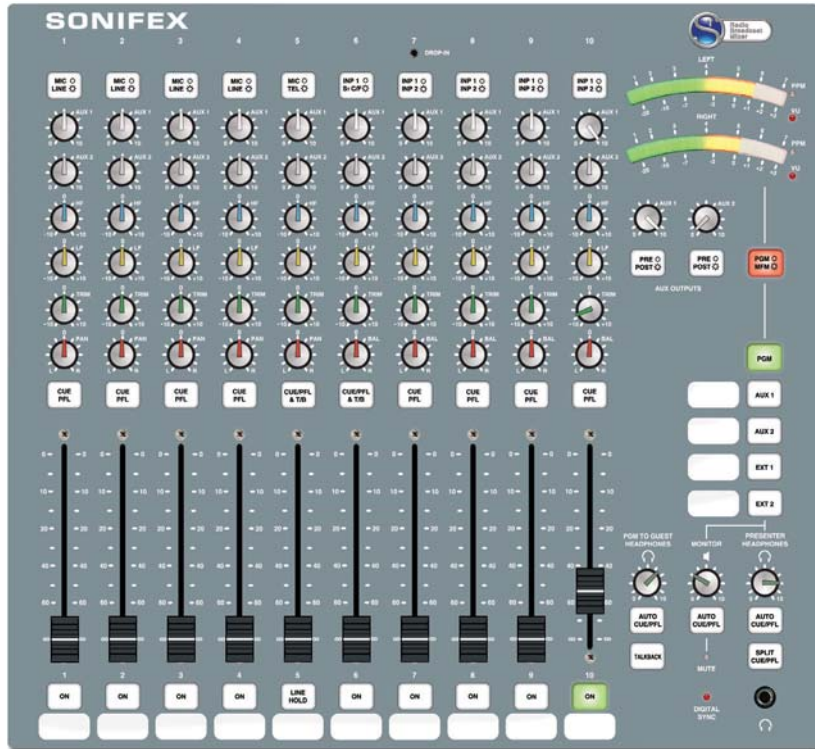
- 1 x stereo XLR line/stereo XLR cleanfeed input.
- 2 x stereo XLR line/stereo RCA inputs, one with a 3.5mm stereo aux input.
- 2 x stereo XLR line/stereo SPDIF & Toslink digital inputs.

Providing in total 5 mic, 4 mono line, 10 stereo analogue, 2 stereo digital, 1 telco & 1 stereo cleanfeed inputs which you can switch between.

Wide-Ranging Input Channels

Input source buttons at the top of each channel strip are used to route the connected source to the mixer buses.

All of the balanced XLR input connectors have a 10dB gain switch on the rear panel for use with unbalanced or low level input sources. The XLR microphone inputs have individual +48V phantom power switches and a gain calibration potentiometer providing up to 65dB of gain for the preamp.



S1 Digital/Analogue Radio Broadcast Mixer, Top View.

Input channels 1 & 2 have 2 separate XLRs for microphone & balanced line input sources.

Input channels 3 and 4 use an XLR and a combination XLR/stereo jack connector to allow a microphone input and both a balanced mono or an unbalanced stereo line input to be used.

Input channel 5 acts as microphone input or as a telco input with a dedicated cleanfeed output, with available line hold remote for connection to a telephone hybrid.

Input channel 6 is a balanced stereo line input on XLR together with a stereo cleanfeed input on balanced XLR for use with ISDN codecs.

Input channels 7 & 8 have stereo balanced XLRs and stereo unbalanced phonos on the rear and channel 7 also has a 3.5mm insert jack socket on the front panel for use with an mp3 player/iPod.

Input channels 9 and 10 provide a stereo analogue XLR input and stereo digital S/PDIF and TOSLink optical inputs.

Any channel which has the fader up and the ON button selected is routed to the main PGM output(s).

Gain for each channel is trimmed by the front panel TRIM control providing ± 12 dB of gain.

Equalisation is provided on every input channel, allowing up to 7dB cut and boost at HF (6.5 kHz) and LF (100Hz). A PAN/BAL(ance) control is available to facilitate stereo imaging.

The use of VCAs controlled by the ALPS long throw 100mm faders give a smooth, repeatable response and ensures tight stereo tracking while eliminating mechanical and electronic noise.

Analogue & Digital Outputs

The S1 has a multitude of output connectivity: one balanced stereo XLR PGM output, two balanced stereo AUX outputs on a 9-way D-type socket, a mono clean feed output on balanced XLR (for use with a telephone hybrid), a stereo cleanfeed output on stereo balanced XLRs (for use with an ISDN/IP codec) and monitor outputs for presenter headphones, guest headphones and loudspeakers. Additional outputs are provided for talkback on a 9-way D-type socket and metering using a 15-way D-type socket.

A digital stereo PGM output is provided in XLR AES/EBU or phono S/PDIF formats. The output can be referenced to an internal clock source between 32 kHz and 96 kHz or external synchronisation sources can be connected via S/PDIF, AES/EBU or BNC wordclock. The illuminated DIGITAL SYNC LED shows when the digital output is locked to either an internal or external clock.

Two Auxiliary Buses

The S1 has two Auxiliary buses that can be configured in either pre-fade or post-fade mode. Each channel can be routed to these buses using the potentiometers provided on each channel strip. Each AUX output has a trim control knob operating between fully attenuated and unity gain. Aux buses can be used for a wide range of purposes including recording telephone conversations, generating different mixes for output, connecting to audio processing equipment and much more.

Comprehensive Monitoring

The control room loudspeakers, presenter's headphones, and guest headphones are on 6.35mm stereo jack sockets. Front panel control knobs are used to vary the monitor and headphone levels and the presenter's headphones can be plugged in to the front and rear of the mixer. The control room monitor loudspeaker and headphone levels are variable between 0 (cut off) and 10 (max). An illuminated MUTE LED shows when a live microphone channel has muted the speakers and there are two pairs of MUTE contact outputs available to illuminate a 'MIC LIVE' light.

A five way electronically interlocking switch bank selects the source routed to the speakers and presenter's headphones from either of two external inputs (EXT 1, EXT

2), the PGM, or AUX Outputs. The buttons illuminate to show the selected source, PGM, AUX 1 and AUX 2 in green, EXT 1 and EXT 2 in red. The external inputs can be used for monitoring an off air signal or another studio output.

Green illuminated AUTO CUE/PFL buttons adjacent to each level control allow the monitoring of PFL when an input channel has been selected to CUE/PFL, either to the monitors or headphones.

For the Presenter headphones, SPLIT CUE/PFL can be selected which places the selected source in mono in one ear and PFL in mono in the other.

A pair of bright 21 segment LED meters can be configured to show either VU or PPM metering. The meters show either the PGM output or the selection heard in the presenter's headphones, selectable by PGM/MFM (Meter Follows Monitor) button.

Talkback

A separate TALKBACK button is provided to allow the Presenter to talk to a Guest. The S1 uses input channel one as the talkback source. Global talkback can also be configured (see the Programmable GPIO section) to allow every mic channel to communicate with the Presenter and Guest headphones.

A separate TALKBACK 9-way D-type socket on the rear panel can be used to connect the talkback output and input to and from other studios.

Configurable Remotes Per Channel

The remote outputs for each channel are highly configurable providing every possible option required to interface your external equipment to the mixer. Each channel input has its own START and STOP remote controls, except the microphone inputs which have only START outputs. (If you wanted a MIC stop control signal, you could configure this using a GPIO). Each remote can be configured to be triggered from a variety of sources, including the ON button and the CUE/PFL Button. The remotes can be set-up to be either pulsed or continuous latched outputs, and if in pulsed mode the ON button has the capability to produce repeated start pulses on additional ON button presses, when the channel is ON with the fader up.

In the case of the Telco & Stereo Cleanfeed outputs you may want to generate start and stop remotes independently of the position of the fader, so that the hybrid or codec can be triggered to connect before the channel is opened. This is possible in 'Telco Mode' where a 'start' is sent when the ON button is initially pressed & a 'stop' is sent when the ON button is pressed again, turning

the channel selection off. In addition the channel can be configured to show the state of the external equipment, e.g. using a tally back GPI signal from an automation system, the ON button can flash green when the end of a song is being reached.

Programmable GPIOs

The S1 also has five General Purpose Inputs/Outputs (GPIO's) available. Each input/output has been designed to be very versatile & almost any operation with the mixer can be achieved when utilising them. A GPI can be configured using the SCI software to perform up to 10 different operations from a single input. For example, in an automated playout situation, you may want to:

- Force 4 channels ON with the faders forced up.
- Force 4 channels to stereo Line Input.
- Mute the Control Room Monitors.



S1-RCK Optional S1 9U 19" Rack Ears.

This configuration would use 9 of the 10 operations available for an individual GPI.

The GPOs are equally powerful. The outputs can be configured to be pulsed or continuous, and active high or low. An output can be generated based on actions required. For example, a GPO can be configured to generate a global talkback function with a set-up so that:

- When Mic 2, Mic 3 & Mic 4 are all not live, generate a GPO continuous output.

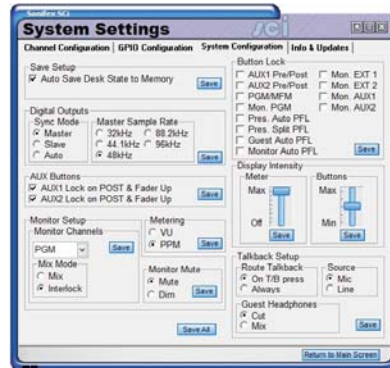
The GPO could then be linked back into one of the GPI's with the input configured to:

- Force PFL on Mics 2, 3 & 4.
- Enable Auto CUE/PFL on Guest H/phones.

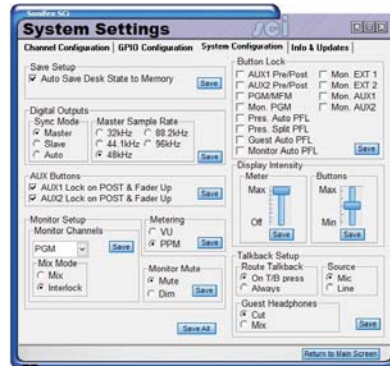
This would allow the guests to freely talk to each other until one of their microphones goes live. This is just an example of the potential uses of the programmable GPIOs.

Remote Control & Configuration Using Sci Software

The S1 mixer is highly configurable and has numerous options allowing the mixer configuration to be tailored to your requirements. Using the freely available Sonifex SCi software, every parameter of the mixer can be set up with ease.



Sci Channel Configuration Page.



Sci System Configuration Page.

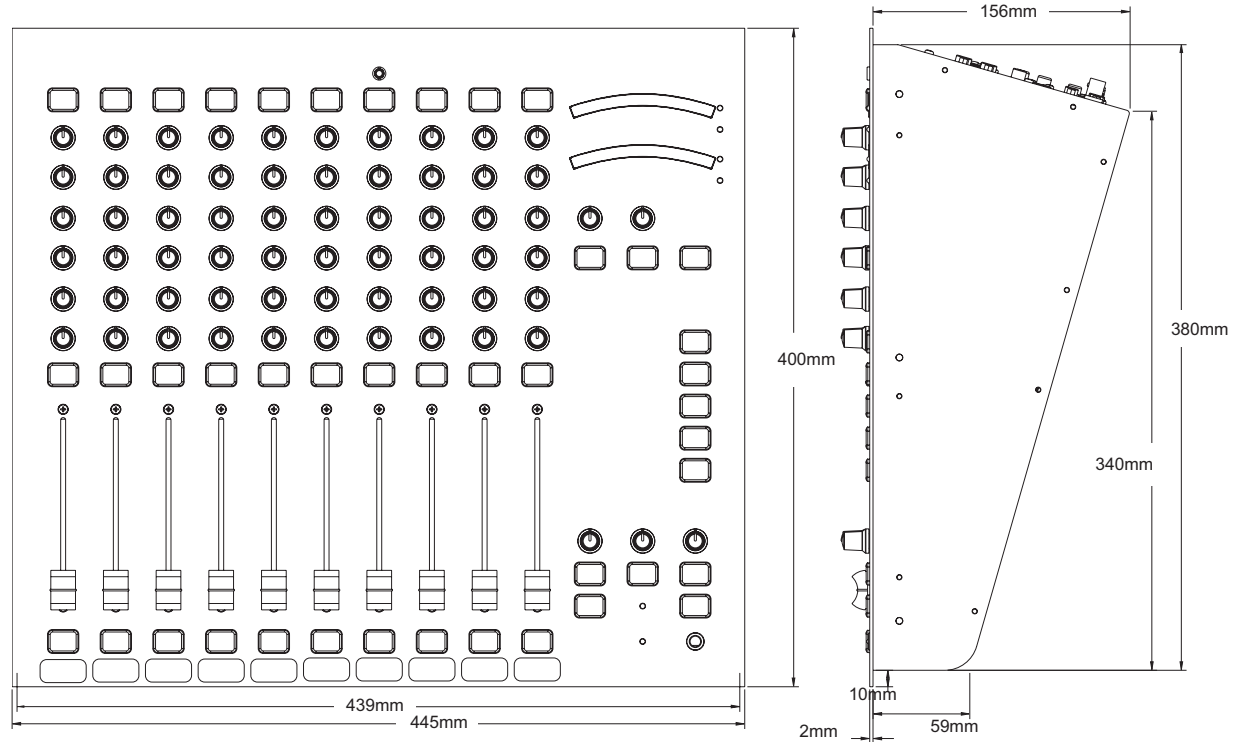


Specification For S1

Input / Output Impedances	
Mic Input:	> 1k5Ω electronically balanced
Mono Line Input:	> 20kΩ electronically balanced
Stereo Line Input:	> 20kΩ electronically balanced
PGM Output:	< 50Ω electronically balanced
Monitor Outputs:	< 75Ω unbalanced
AES Input/Output:	110Ω
S/PDIF Input/Output:	75Ω
BNC Wordclock Input:	50Ω
Input / Output Gain Range	
Mic Input:	Preset pot +21dB to +64dB ref -50dBu, TRIM pot ± 12dB
Mono Line:	Switch 0dB to +10dB ref 0dBu, Input: TRIM pot ± 12dB
Stereo Line Input:	Switch 0dB to +10dB ref 0dBu, TRIM pot ± 12dB
Telco Input:	Switch 0dB to +10dB ref 0dBu, TRIM pot ± 12dB
Stereo Cleanfeed Input:	Switch 0dB to +10dB ref 0dBu, TRIM pot ± 12dB
Digital Input:	0dBFS = +18dBu on input; TRIM pot ± 12dB allowing 0dBu to +24dBu
Digital Output:	0dBFS = +18dBu
Frequency Response	
Mic Input:	40Hz to 20kHz -1dB, +0dB
Line Inputs:	20Hz to 20kHz -0.5dB, +0dB
RCA Inputs:	20Hz to 20kHz -0.5dB, +0dB
Noise (20Hz to 20kHz)	
Mic Input E.I.N.:	-130dB with 150Ω source.
Stereo Inputs:	-92dBu ref 0dB (fader down, no routing) -91dBu (fader down, one channel routed) -86 dBu (unity gain, one channel routed) -83 dBu (unity gain, two channels routed)
Distortion	
Total Harmonic Distortion:	0.015% at 1kHz, 0dBu
Distortion:	0.015% at 10kHz, 0dBu

Crosstalk	
Inter-Channel:	< -80dBu typically
Equalisation	
LF:	Shelving at 100Hz ± 7dB
HF:	Shelving at 6.5kHz ± 7dB
Range	
Pan Range:	Off/-3dB centre/off
Balance Range:	± 6dB
Common Mode Rejection Ratio	
Mic Input:	>60dB typically
Digital I/O	
Sync Input Sample Rate Range:	32kHz – 96kHz
Output Sample Rates:	32kHz, 44.1kHz, 48kHz, & 96kHz (Using Onboard Clock)
Output Sample Width:	24 bit
Output	
Headphone Output Load:	>45Ω, recommended 400
Maximum Output (Analogue):	+26dBu balanced into 2k or greater
Rear Panel Switches	
Phantom Power:	+48V individual per mic input
Gain Switch:	+10dB per XLR balanced mono & stereo input & EXT 1, EXT 2 inputs
Input & Output Connections	
Analogue Inputs:	5 x Microphone XLR 3 pin sockets 2 x Mono line XLR 3 pin sockets 2 x Mono/stereo line combi XLR 3 pin sockets & 6.35mm stereo jack sockets 1 x Telco XLR 3 pin socket 5 x Stereo line pairs XLR 3 pin sockets 2 x Stereo line pairs phono sockets 1 x Stereo cleanfeed pair XLR 3 pin sockets 1 x Stereo insert, 3.5mm jack socket
Digital Inputs:	2 x S/PDIF phono sockets, 2 x TosLink optical connectors
Analogue Outputs:	2 x XLR 3 pin plug (balanced) AUX: 9-way 'D'-type socket (balanced) TELCO: XLR 3 pin plug (balanced) STEREO CLEANFD: 2 x XLR 3 pin plug (balanced)
Monitor Outputs:	6.35mm stereo jack sockets (2 x

	Presenter, 1 x Guest, 1 x Monitor)
Digital Outputs:	AES/EBU XLR 3 pin plug (balanced) or S/PDIF phono socket.
Digital Sync Inputs:	Wordclock on BNC, AES/EBU on XLR socket and S/PDIF on phono socket.
EXT Inputs:	9-way 'D'-type socket
Mono Remotes:	25-way 'D'-type plug
Stereo Remotes:	25-way 'D'-type plug
Meterbridge Port:	15-way 'D'-type socket
Talkback Interface:	9-way 'D'-type socket
RS232 Serial Port:	9-way 'D'-type socket
Mains Input:	Filtered IEC, continuously rated 85-264VAC, 47-63Hz, 45w nominal, 50w peak
Fuse Rating:	Anti-surge fuse 2A 20 x 5mm
Equipment Type	
S1:	S1 radio broadcast mixer
Physical Specification	
Dimensions (Raw):	44.5cm (W) x 40.0cm (D) x 15.6cm (H) 17.5" (W) x 15.75" (D) x 6.1" (H)
Dimensions (Boxed):	62cm (W) x 58cm (D) x 36cm (H) 24.40" (W) x 22.83" (D) x 14.17" (H)
Cut-Out Dimensions:	44.0cm, 17.3" (W) x 38.1cm, 15" (D) both dims +0.2cm, -0cm
Weight:	Nett: 12.0kg Gross: 13.6kg Nett: 26.4lb Gross: 29.9lb
Accessories	
S1-RCK:	Optional S1 9U rack ears.



S1 Digital/Analogue Radio Broadcast Mixer Dimensions.

SONIFEX

www.sonifex.co.uk

UK Office:

Sonifex Ltd

61 Station Road, Irthlingborough,

Northants, NN9 5QE, UK

Tel: +44 (0) 1933 650700

Fax: +44 (0) 1933 650726

Email: sales@sonifex.co.uk

Australian Office:

Sonifex Pty Ltd

Unit 12/6 Leighton Place, Hornsby,

New South Wales 2077, Australia

Tel: +61 (2) 9987 0499

Fax: +61 (2) 9476 4950

Email: sales@innescorp.com.au