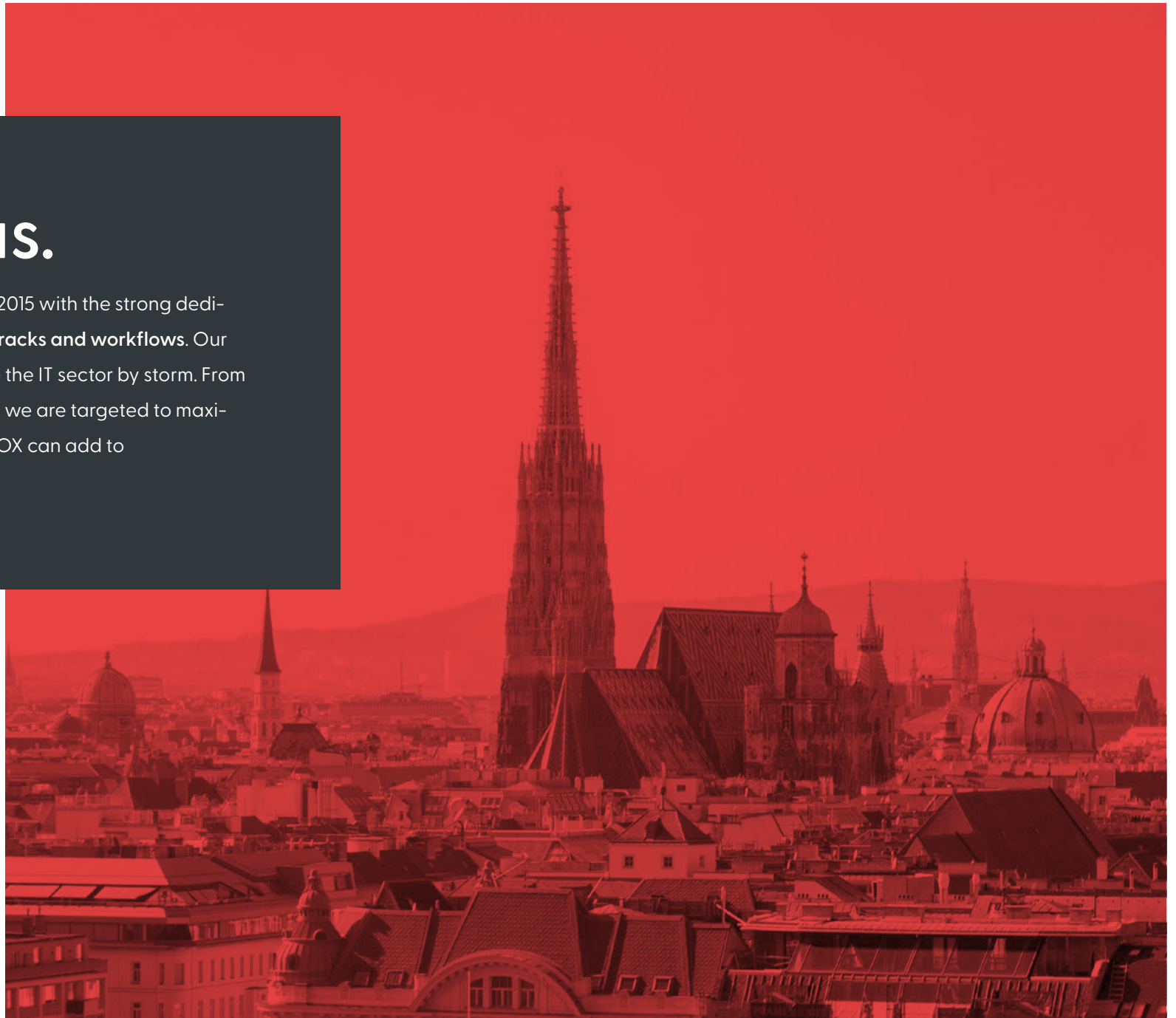
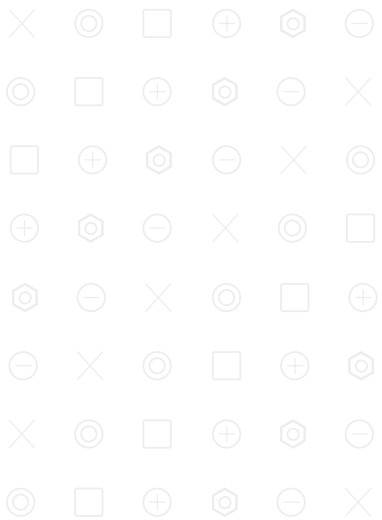


Products and Tools



About us.

PATCHBOX was founded in 2015 with the strong dedication to **optimize network racks and workflows**. Our revolutionary products take the IT sector by storm. From our **headquarters in Vienna** we are targeted to maximize the value that PATCHBOX can add to customers.

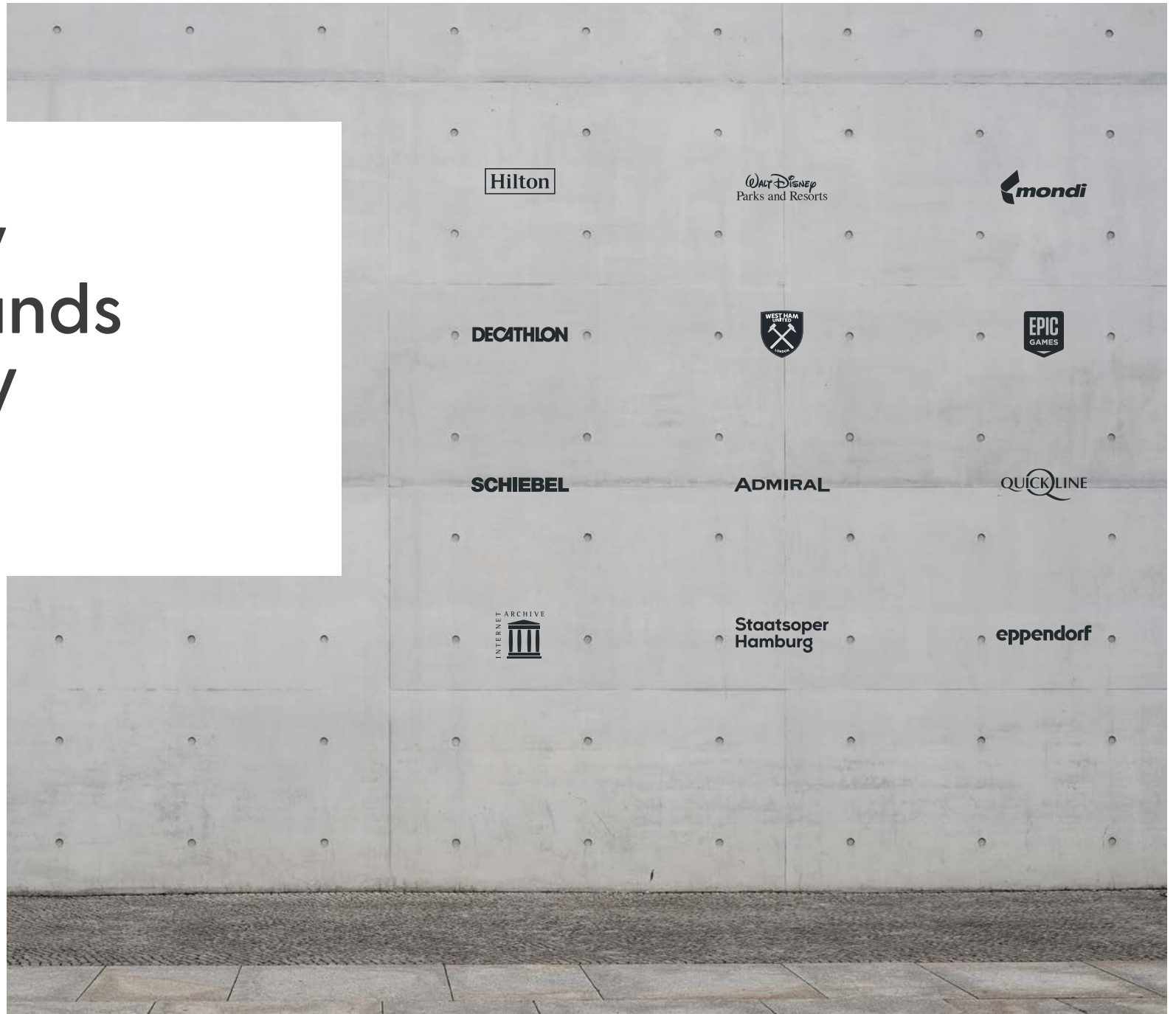
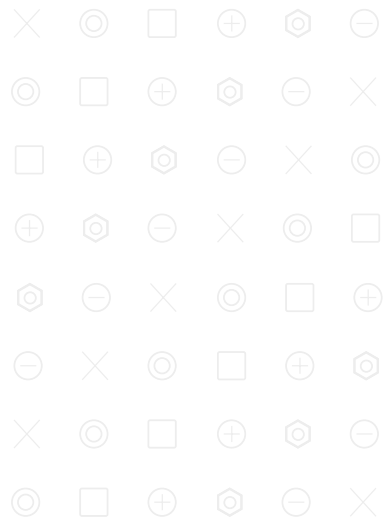


Awarded.
Patented.
Unique.





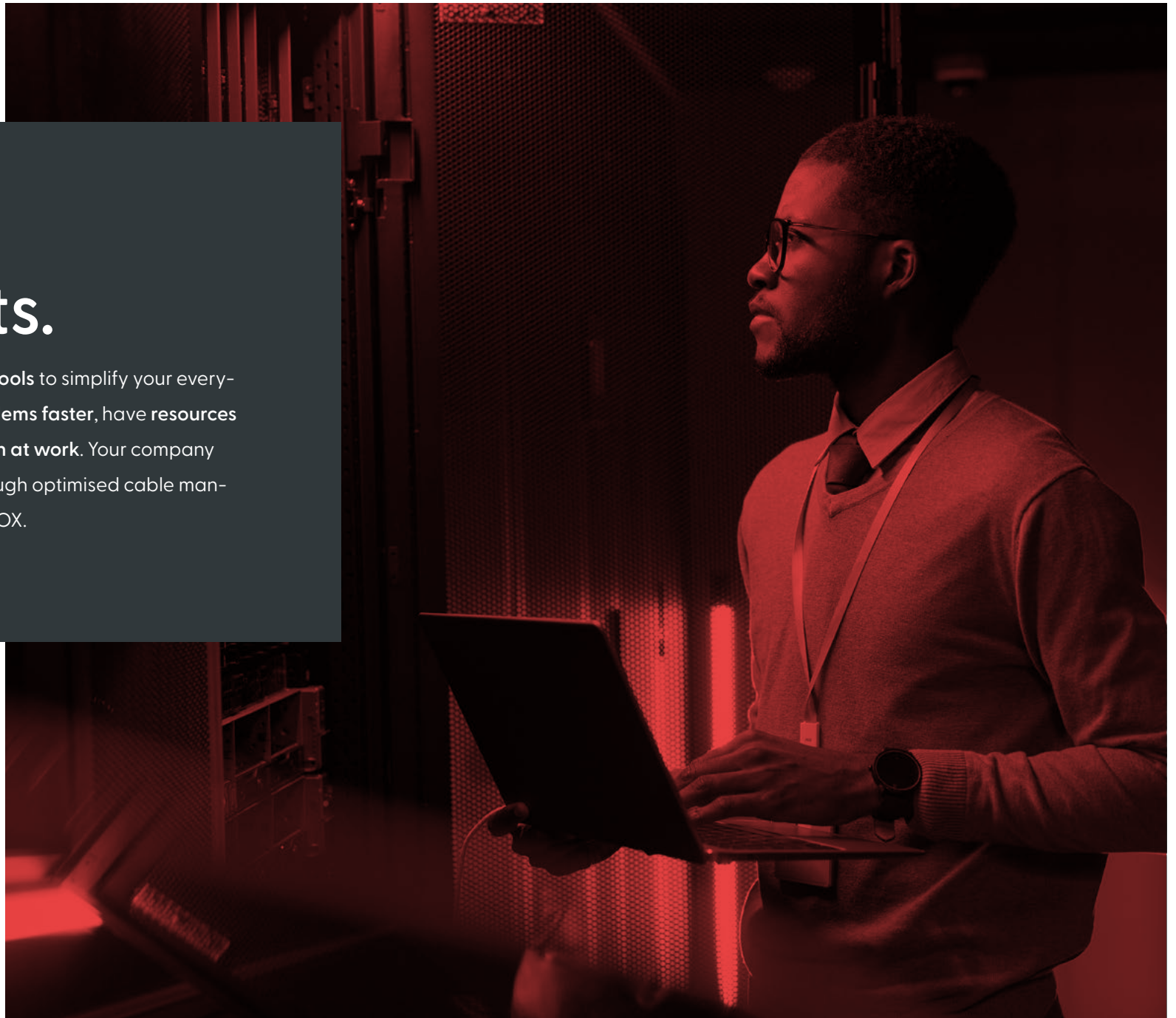
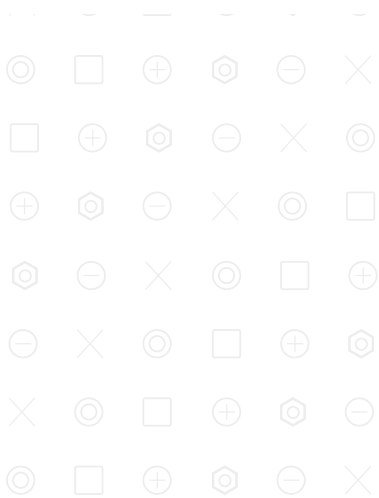
Trusted by
global brands
from every
industry.





Our Products.

We develop **revolutionary tools** to simplify your every-day IT work. You **solve problems faster**, have **resources for other tasks** and **more fun at work**. Your company **saves time and money** through optimised cable management thanks to PATCHBOX.



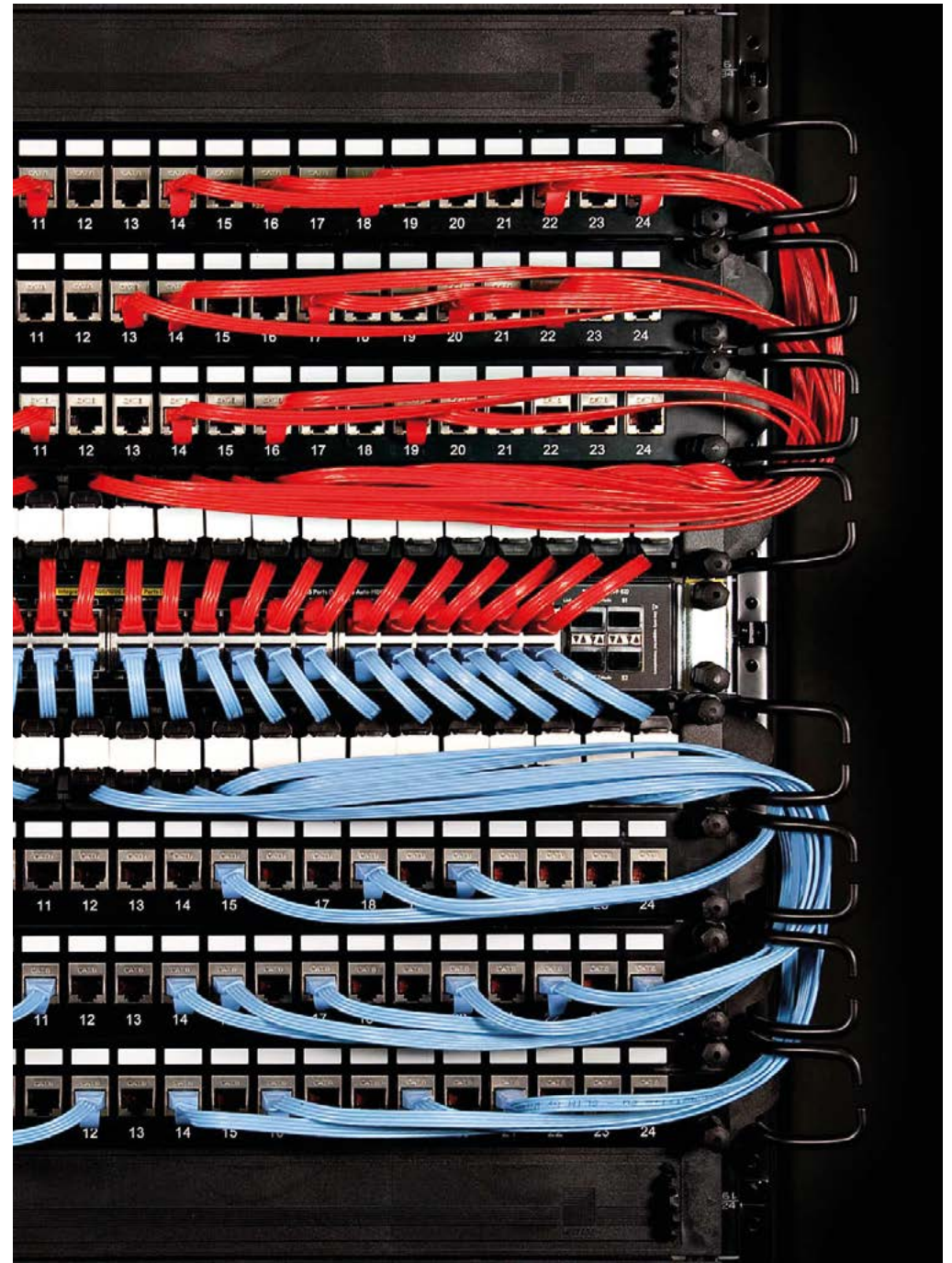
PATCHBOX® – SIMPLIFY CABLE MANAGEMENT

It's a perfect patch.

The PATCHBOX® is the most modern cabling system for network cabinets and makes conventional cable guides and patch cables simply look old. Thousands of satisfied customers worldwide rely on this patented innovation to make their IT more efficient, faster and more economical.

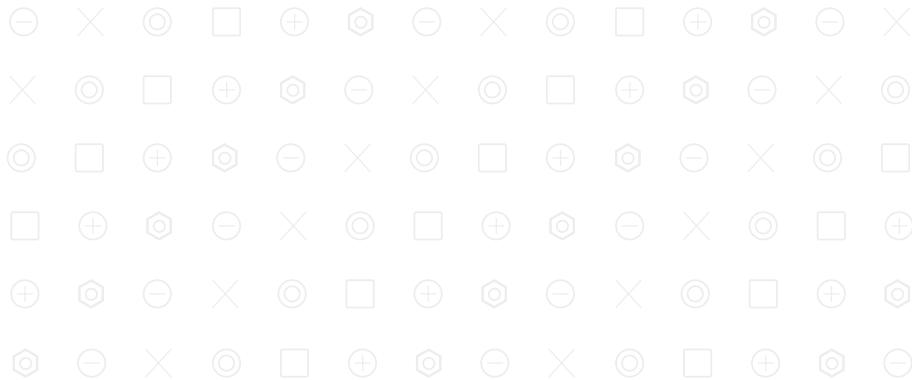
Buy now

Get more Information



How it works? Nifty.

The PATCHBOX® is fully modular and consists basically of a PATCHBOX® **Frame** that offers **24 cassette slots**. These slots can be filled up individually with different types of cable cassettes. We currently offer two types of frames: **One for full-size racks** called the „PATCHBOX® Plus+ Frame“ and **one for wall cabinets**, the „PATCHBOX® 365 Frame“.



PATCHBOX® Plus+ Frame

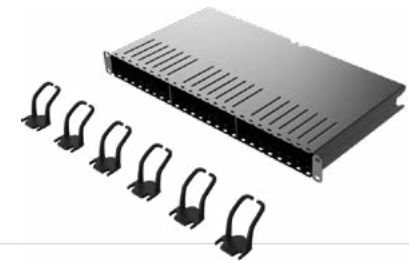
The Plus+ Frame will be delivered with mounting rails incl. hex nuts, 6x Patchcatch and 96 ID Labels.



Frame	Installation Depth	Mounting System	Gross Weight
for Full Size Racks	600mm	extractable mounting rails from 500mm to 850mm	4.20 kg (9.26 lbs)

PATCHBOX® 365 Frame

The 365 Frame will be delivered with 6x Patchcatch, 96 ID Labels and 2x /dev/mount.



Frame	Installation Depth	Mounting System	Gross Weight
for Wall Cabinets	365mm	can be mounted with /dev/mount from PATCHBOX	3.22 kg (7.10 lbs)

Modular cassette system

The PATCHBOX® Cassettes contain **flat shielded or unshielded Cat.6a (STP/UTP) or fiber optic (OS2/OM4) cables**. We have 3 different cable lengths: 0.8m (8RU), 1.8m (30RU) and for the rare event you need to patch from top to bottom we offer a special solution called the “PATCHBOX® Long Range Cassette” with a max. cable length of 2.5m (46RU).

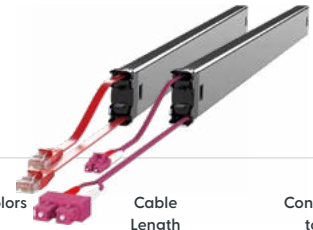
Cassettes for PATCHBOX® Plus+ Frame



Name	Cable Type	Cable Colors	Cable Length	Connector
Plus+ Cat.6a Cassette	STP/UTP	Black, Blue, Green, Red, White, Yellow, Grey (STP only), Violet	1.8m / 30RU	RJ45
Plus+ Fiber Optic Cassette	OS2/OM4	Yellow, Erika Violet	1.8m / 30RU	LC-LC LC-SC

Important: PATCHBOX® Plus+ Cassettes are not compatible with the PATCHBOX® 365 Frame!

Long Range Cassettes for PATCHBOX® Plus+ Frame



Name	Cable Type	Cable Colors	Cable Length	Connector
Plus+ Cat.6a Cassette Long Range	STP/UTP	Black, Blue, Green, Red, White, Yellow, Grey (STP only), Violet	1.8m+0.7m / 46RU	RJ45
Plus+ Fiber Optic Cassette Long Range	OS2/OM4	Yellow, Erika Violet	1.8m+0.7m / 46RU	LC-LC LC-SC

Important: 2.5m cover 46 RU: 1.8m extractable + 0.7m overlength non-retractable. Need Support? Get in touch with us!

Cassettes for PATCHBOX® 365 Frame



Name	Cable Type	Cable Colors	Cable Length	Connector
365 Cat.6a Cassette	STP/UTP	Black, Blue, Green, Red, White, Yellow, Grey (STP only), Violet	0.8m / 8RU	RJ45
365 Fiber Optic Cassette	OS2/OM4	Yellow, Erika Violet	0.8m / 8RU	LC-LC LC-SC

Important: PATCHBOX® 365 Cassettes are also compatible with the PATCHBOX® Plus+ Frame!

Flat. Shielded. Tested. Certified.

Our flat and twisted Cat.6a cables are **tested to ISO/IEC 11801 Channel Class Ea and ANSI/EIA/TIA-568 Cat 6A Channel standards**, are RoHS compliant and capable of PoE (STP: PoE / UTP: PoE++ Type 3). They are **easier to bend**, take up less space and are less bulky to handle. Patch cords for both the PATCHBOX® Plus+ and PATCHBOX® 365 are available in **eight different colors**: black, white, red, green, blue, yellow, grey (STP only) and violet. Order your PATCHBOX® pre-assembled to your specific requirements!



Glass clear advantages.

Fiber optic cables deliver **significantly more speed** than copper cables. **10, 40, 100 gigabit – anything is possible.** It is also possible to integrate 23 copper cassettes into one PATCHBOX® Frame and one fiber optic cassette takes over the uplink. For our Fiber PATCHBOX we use one of the very best fiber optic cables. They are RoHS compliant and made with optical fibers from Corning®, the most bend-insensitive available on the market.

01. Frames

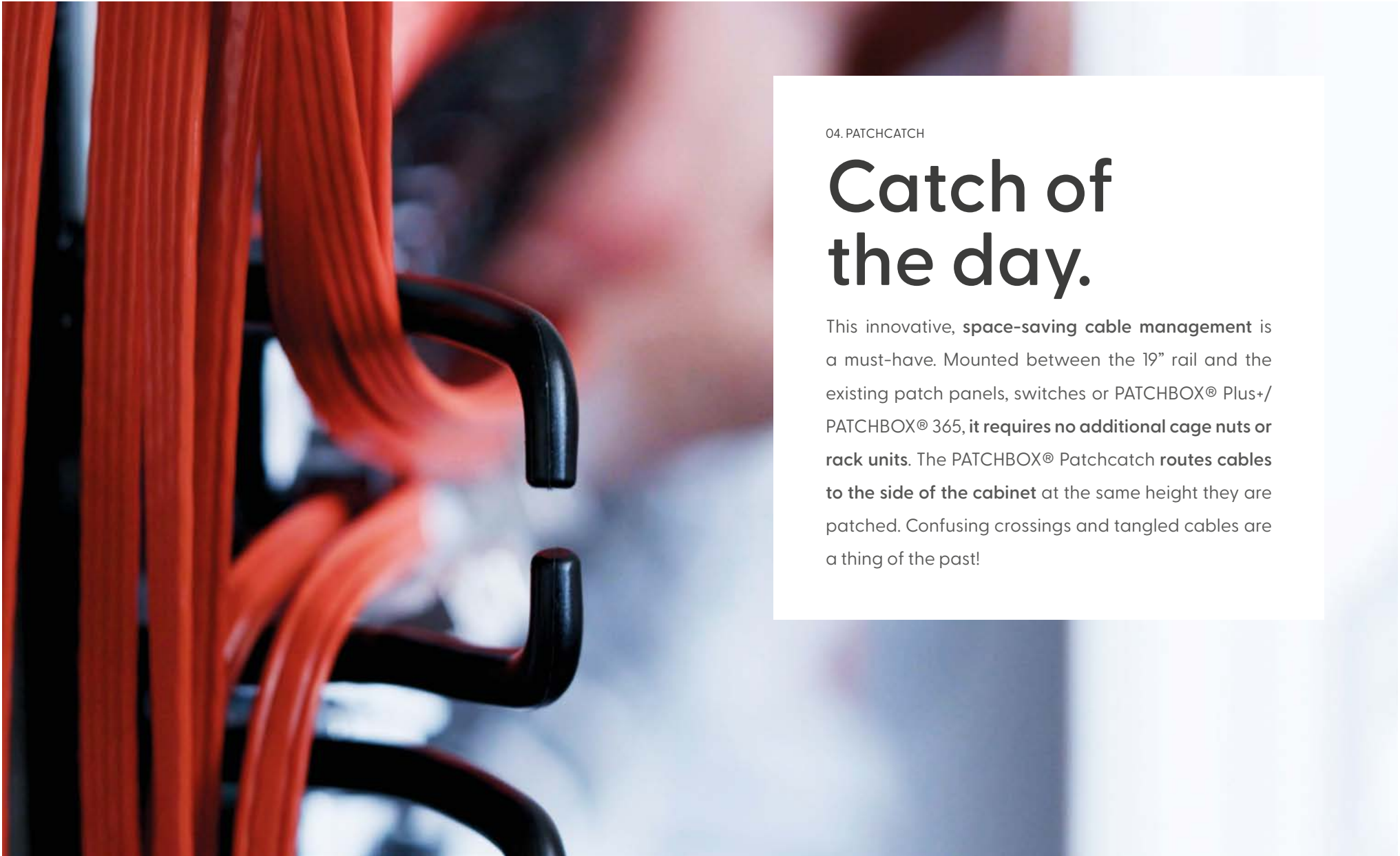
02. Cassettes

03. Cables

04. Patchcatch

05. PATCHBOX®

06. Simplified



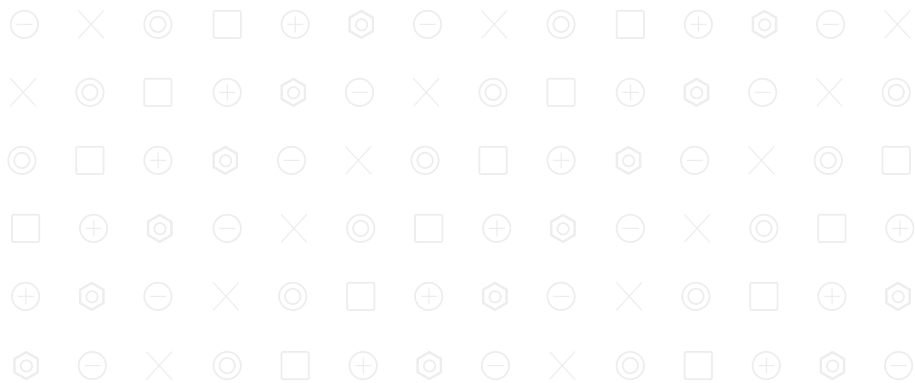
04. PATCHCATCH

Catch of the day.

This innovative, **space-saving cable management** is a must-have. Mounted between the 19" rail and the existing patch panels, switches or PATCHBOX® Plus+/
PATCHBOX® 365, it **requires no additional cage nuts or rack units**. The PATCHBOX® Patchcatch **routes cables to the side of the cabinet** at the same height they are patched. Confusing crossings and tangled cables are a thing of the past!

Keeping your Network Rack clean & neat!

Our PATCHBOX® is available pre-assembled. One as PATCHBOX® Plus+ for large network cabinets and one as PATCHBOX® 365 for small wall cabinets.



01. Frames

02. Cassettes

03. Cables

PATCHBOX® Plus+

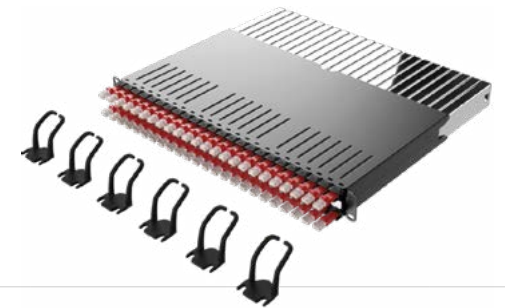
The PATCHBOX® Plus+ will be delivered with 24 Cassettes, a Plus+ Frame, 6x Patchcatch, 2x adjustable mounting rails incl. hex nuts and 96 ID Labels.



Name	Cable Type	Cable Colors	Cable Length	Connector
PATCHBOX® Plus+ Cat.6a	STP/UTP	Black, Blue, Green, Red, White, Yellow, Grey (STP only), Violet	1.8m / 30RU	RJ45
PATCHBOX® Plus+ Fiber Optic	OS2/OM4	Yellow, Erika Violet	1.8m / 30RU	LC-LC LC-SC

PATCHBOX® 365

The PATCHBOX® 365 will be delivered with 24 Cassettes, a 365 Frame, 6x Patchcatch, 2x /dev/ mount and 96 ID Labels.

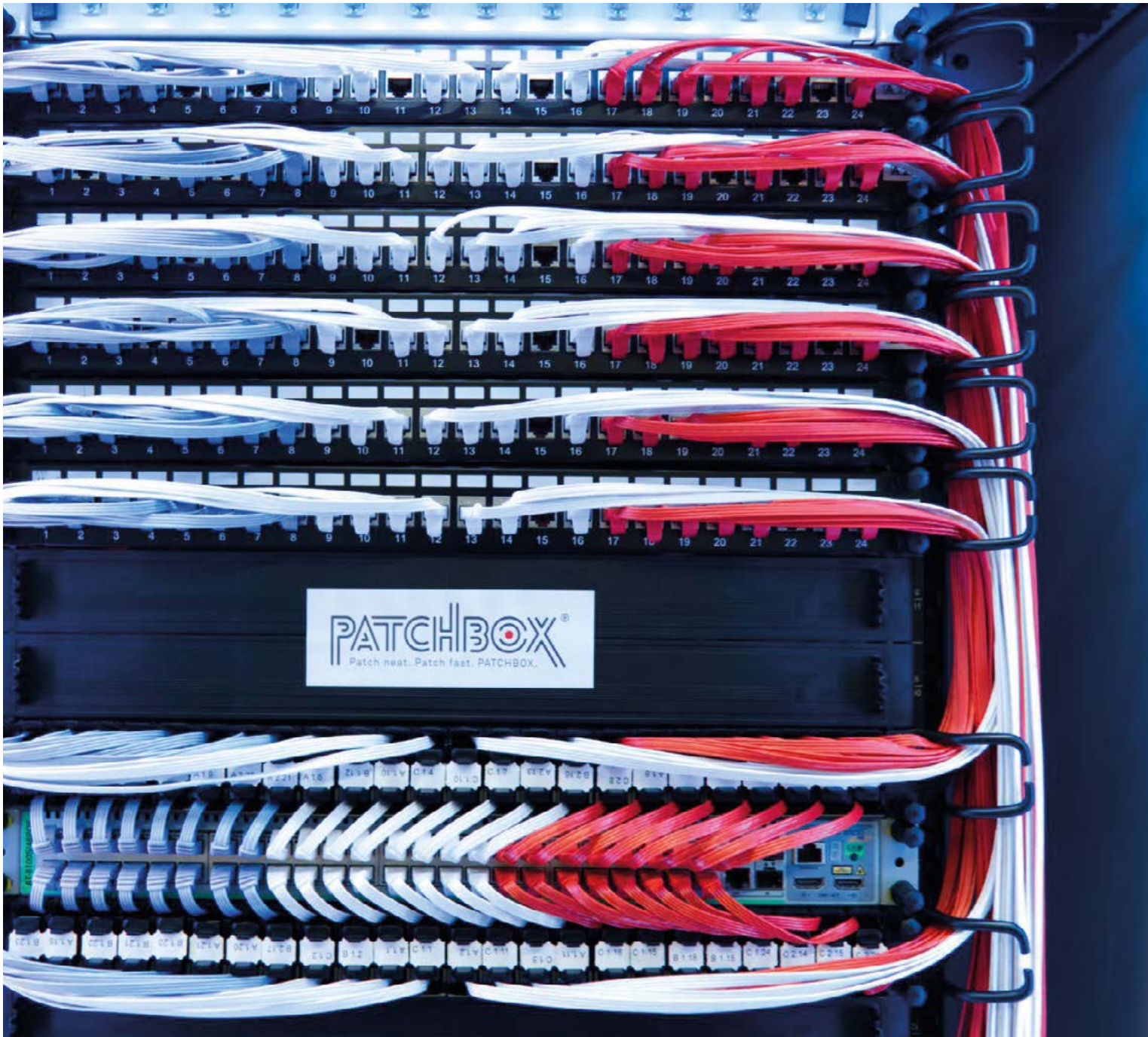


Name	Cable Type	Cable Colors	Cable Length	Connector
PATCHBOX® 365 Cat.6a	STP/UTP	Black, Blue, Green, Red, White, Yellow, Grey (STP only), Violet	0.8m / 8RU	RJ45

04. Patchcatch

05. PATCHBOX®

06. Simplified



06. SIMPLIFIED



Work Smarter

Installation of the PATCHBOX® including patching of the 24 cables is 8x faster than conventional methods. Typical maintenance work (moves, adds, changes) or switch replacement up to 10x faster.



Save Precious Rack Space

You don't need horizontal cable managers or any other conventional cable management. This saves up to 50% more space in your network cabinet.



Better Air Circulation

With the PATCHBOX® you ensure better air circulation in your network rack. Because of that your expensive hardware components will last longer.



5 Year Warranty

The PATCHBOX® was developed by network technicians for network technicians. For us, the highest quality standards are just good enough.

The Setup to getup!

Setup.exe is a simple, but highly effective **installation tool**. It is like a third hand. One technician can do the work of two. **19" components are mounted in seconds** without balancing expensive equipment with one hand. Mounted on the outside, **it also serves as a shelf for a laptop or a diagnostic tool**.



Super quick.

The Setup.exe is mounted in seconds and saves you a lot of time.



Lifetime warranty.

You will only need one Setup.exe in your lifetime. Trust us.



Load carrier.

Carries components up to 50 kg (110 lbs) for you.



Adaptable.

Suitable for all 19" rails with threaded holes and square punched holes.



Mobile workstation.

Configure switches, servers and much more with two hands. The Setup.exe holds your laptop on the rubberized side – so nothing slips off!

Your third hand.

No more balancing expensive components with one hand while inserting screws with the other. The Setup.exe takes up to 50kg (110lbs) of equipment off your hands – and a lot of responsibility!

Mounted in seconds.

Two spring-loaded bolts fix the Setup.exe quickly and securely. The retaining plates made of durable stainless steel can be conveniently adapted to 19" rails with different thicknesses. The legs of the Setup.exe are made of aluminum – less weight to carry on your service calls!

Your Rack Installation Wizard.



Buy now

Get more Information

Goodbye, Cage Nuts!

The /dev/mount makes hardware installation and removal **faster, safer and more convenient**. The snap-in feature allows the /dev/mount to be quickly placed on the 19" rail. The reversible nuts **can be conveniently tightened by hand**. The metal body grounds the components. **Do not use any tools for the installation!**



Highest Quality

High-quality spring steel and aluminum. Durable. Made in Germany.



Compatibility.

Suitable for 19" rails with square punched holes, which can be used to install standard server rails.



Toolless.

Hex nuts can be tightened by hand. You don't need any further tools except your fingers.



That's included

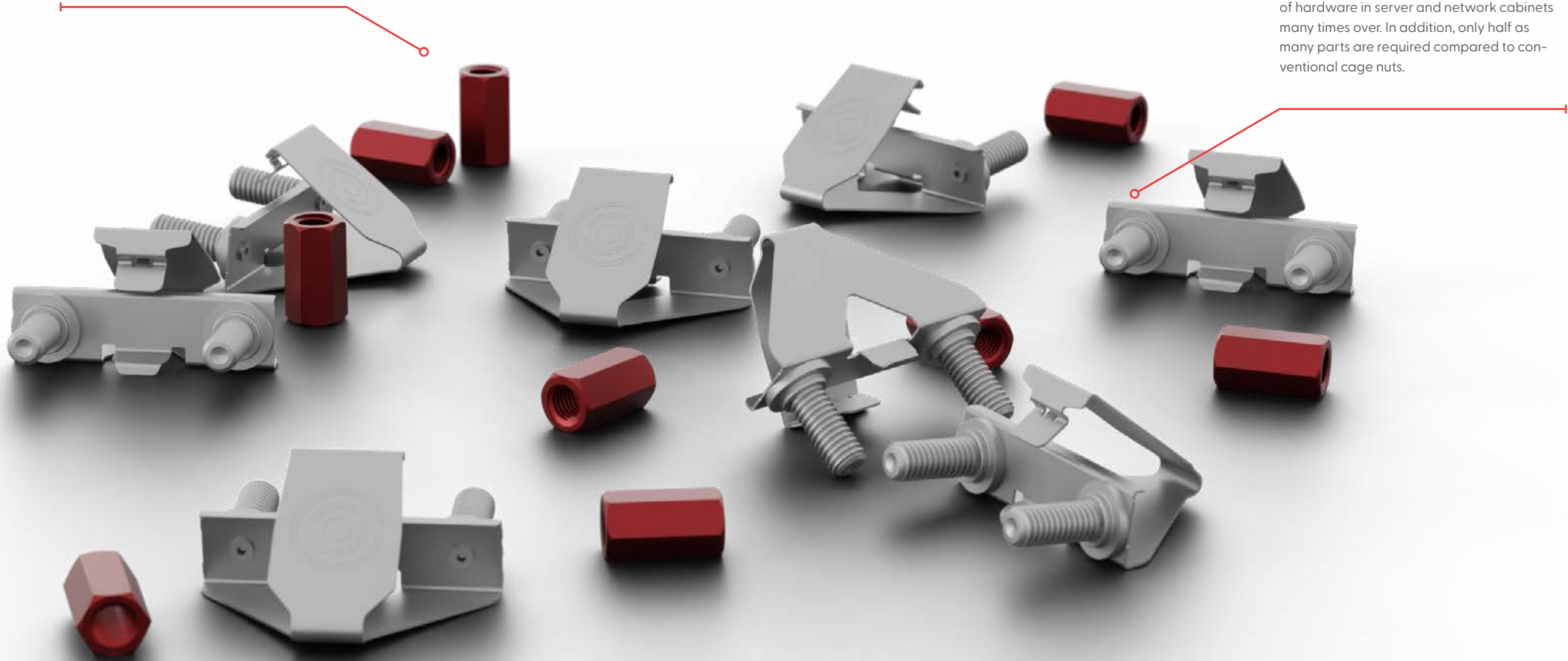
Includes 50 /dev/mounts and 100 hex nuts (equivalent to 100 cage nuts and bolts for mounting 25x 1RU devices).

Easiest handling.

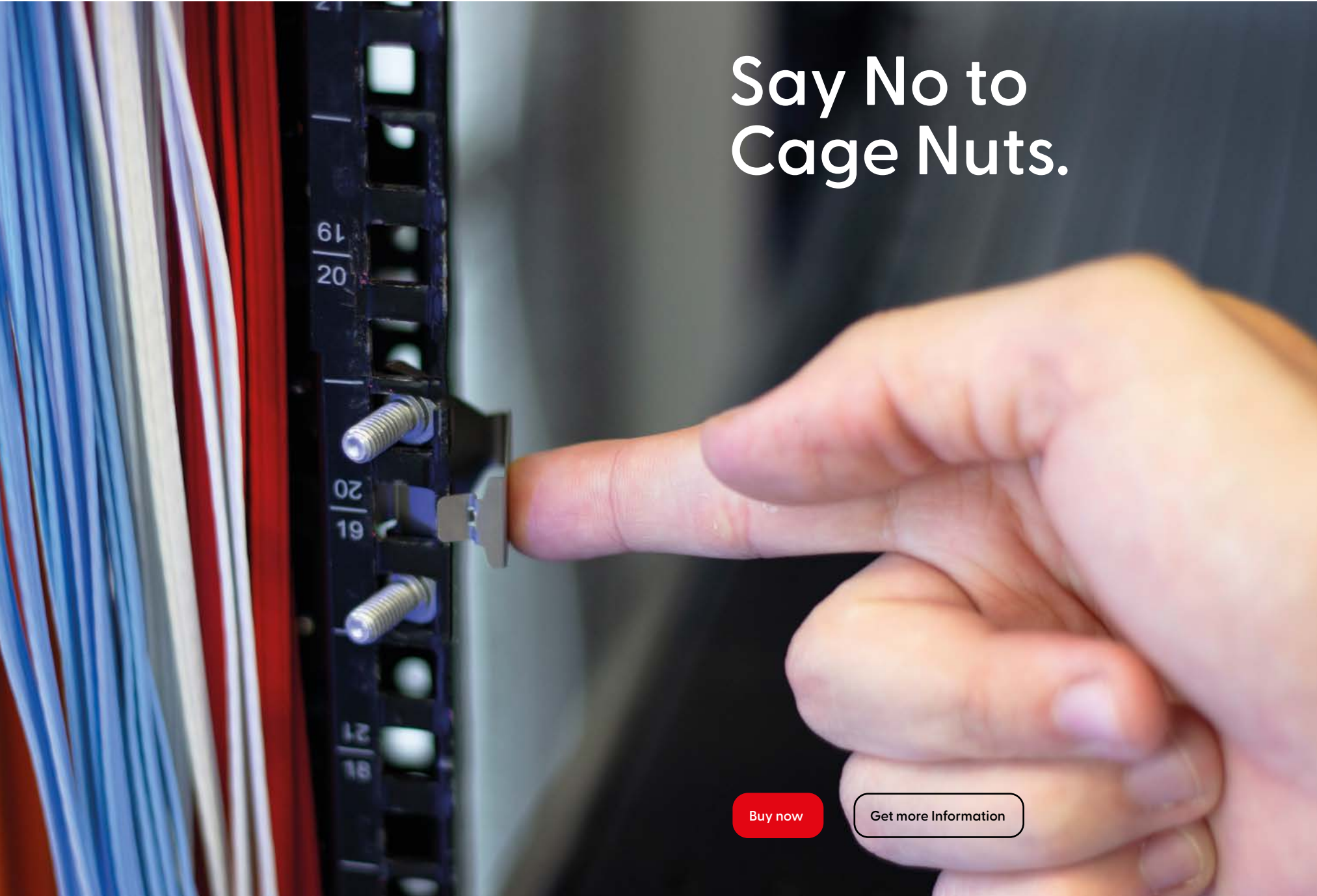
The /dev/mount makes hardware installation and removal faster, safer and more convenient. The snap-in feature allows the /dev/mount to be quickly placed on the 19" rail. The reversible nuts can be conveniently tightened by hand. And the metal body grounds the components.

Ready for immediate use.

The /dev/mount is delivered ready to use and does not need to be assembled beforehand. It speeds up and simplifies the installation of hardware in server and network cabinets many times over. In addition, only half as many parts are required compared to conventional cage nuts.



Say No to Cage Nuts.



Buy now

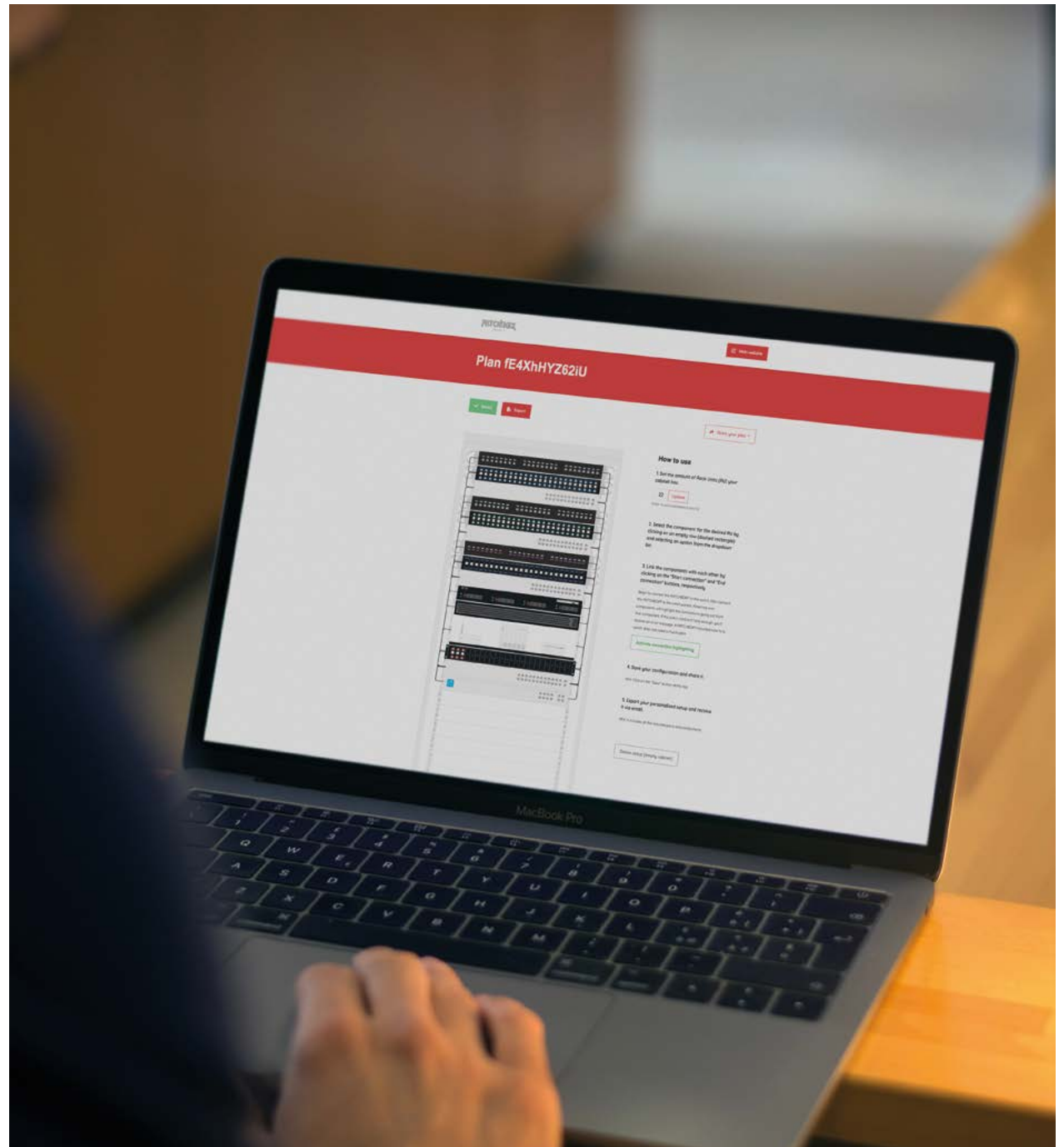
Get more Information

Your Master Plan.

Configure and export your personal network rack setup in a few minutes. You can either start completely from scratch or just use and edit one of our setup examples. Once you are done with the setup you can export the result and then off you go shopping.

P.S.: Don't forget the PATCHBOX® in your setup!

Start planning your Rack now!





sales@patchbox.com
+43 1 99 71 96 0
www.patchbox.com



0 311778 771352 >