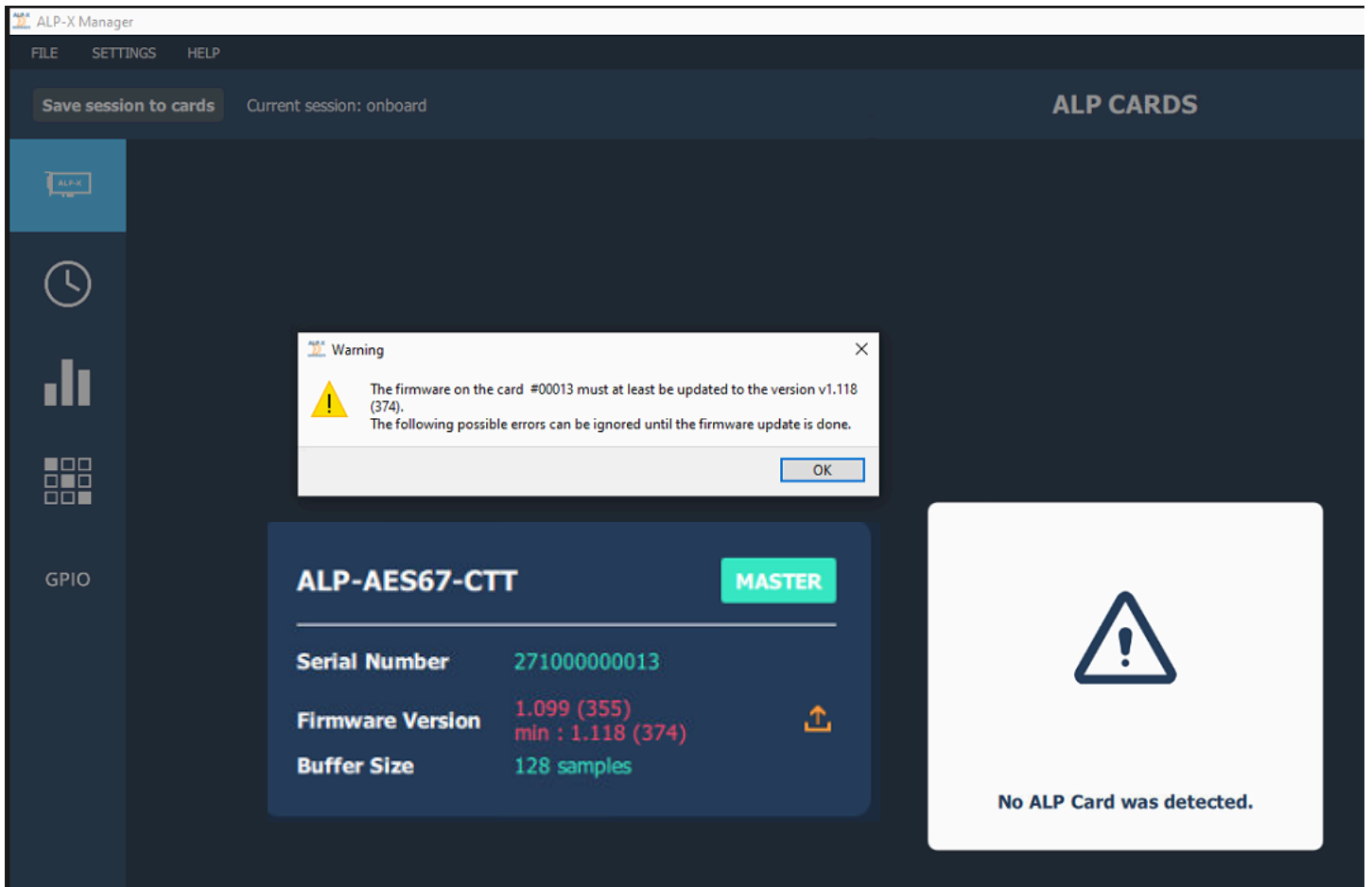


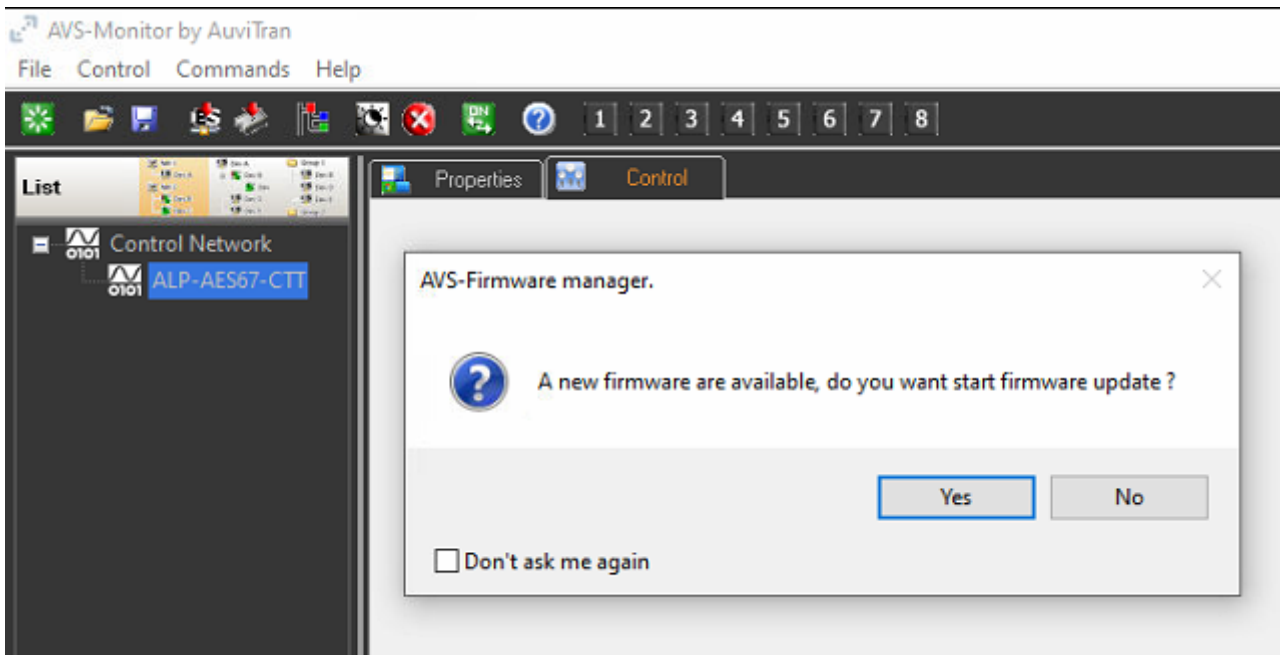
HOW TO UPDATE ALP-DANTE or ALP-AES67 sound card

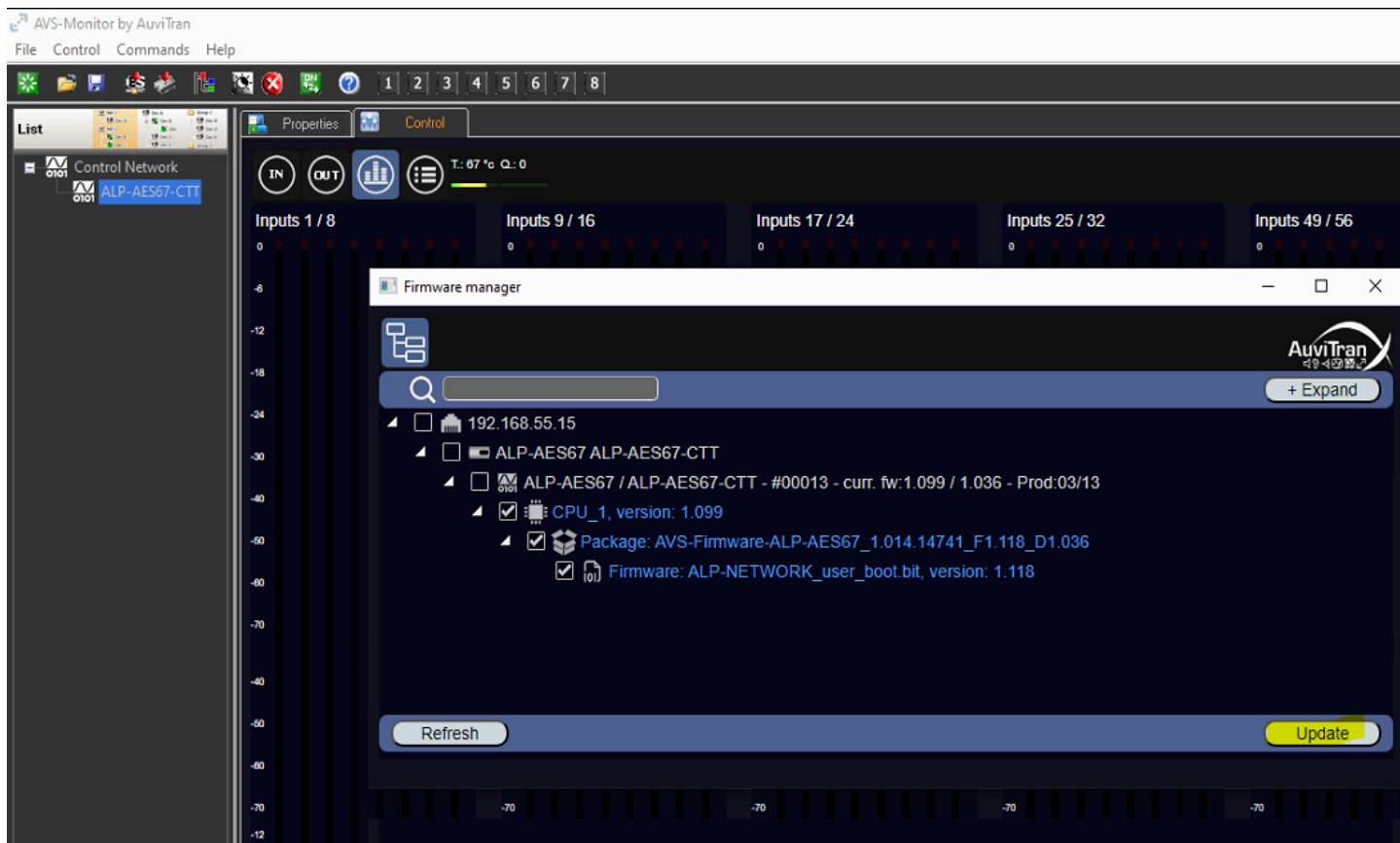
When you receive a Digigram ALP-DANTE or ALP-AES67 sound card, you may have to apply a firmware update to the card before use. This happens when the message below is displayed when running the application "ALP-X Manager" under Windows



To do so, connect your PC and the ALP card to the DANTE / AES67 network.

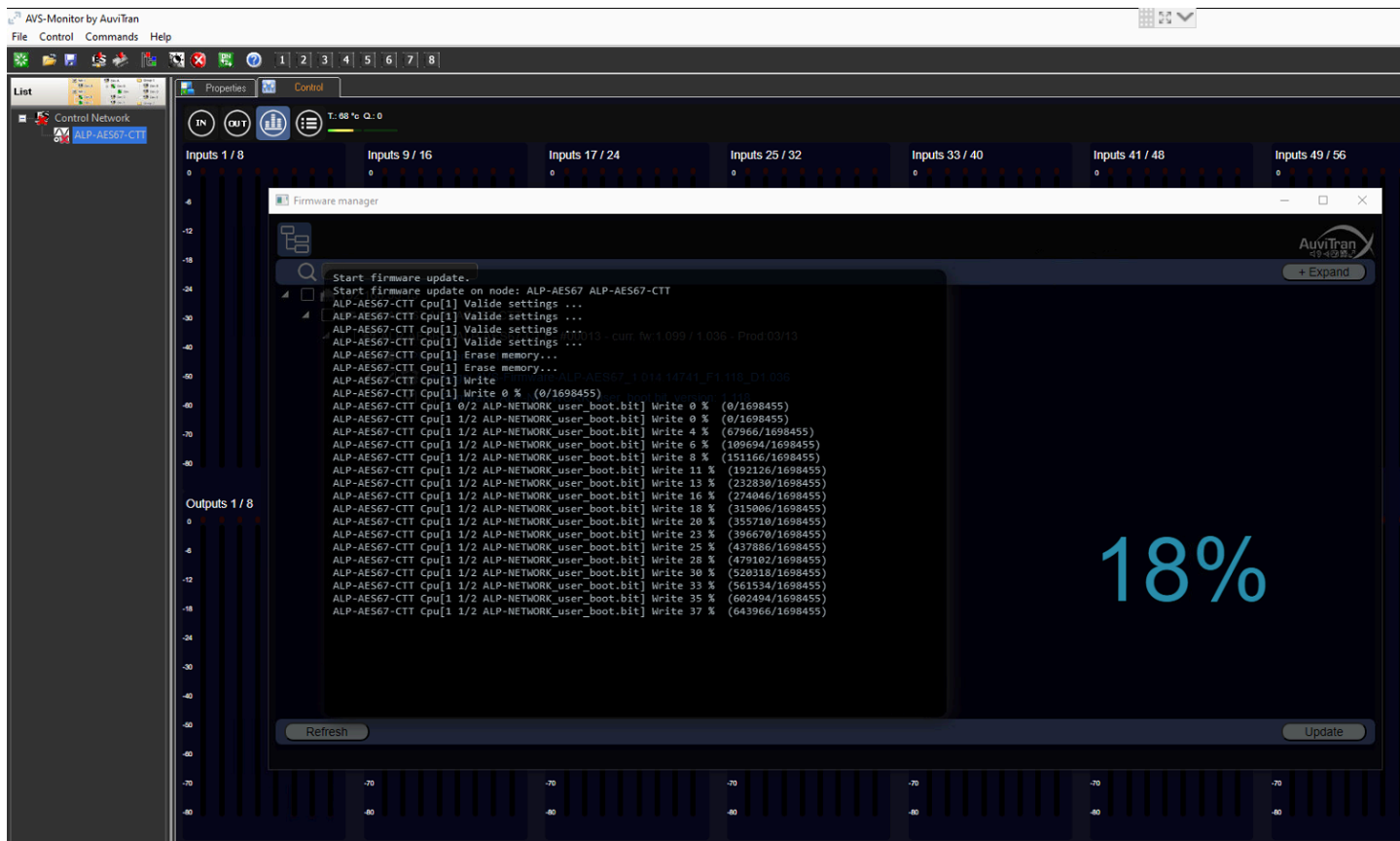
Then download and install the latest version of **AVSMonitor** software from AUVITRAN website and launch it <https://www.auvitran.com/fr/software/avs-monitor/>





Select the appropriate device and then press update

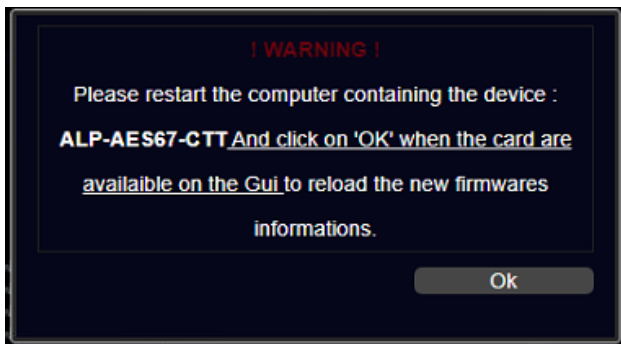
This process will take few minutes



If your ALP card is not detected it may be a network issue.
Make sure the card is visible under Dante controller if you have an ALP-DANTE

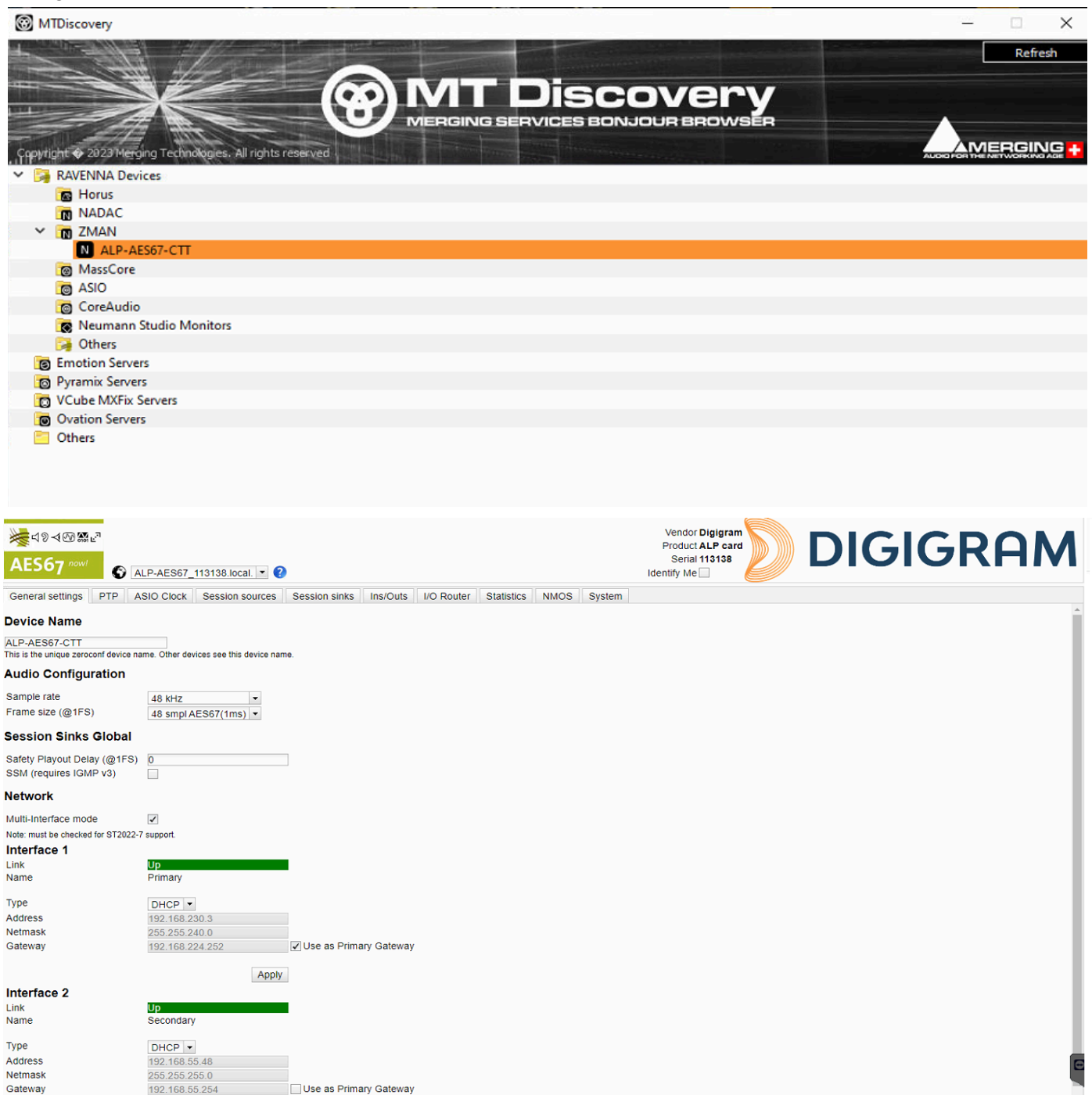
At this stage, it is necessary to **power off** the computer hosting the card, and then power it on.

Caution: a simple reboot is not enough.



If you are using the ALP-DANTE the configuration will be done through [Dante Controller](#)

If you are using the ALP-AES67 we recommend the use of the Merging tool [MTDiscovery](#) to get access to the webpage of the ALP-AES67



The screenshot shows the MTDiscovery web interface. At the top, there's a header with the MT Discovery logo and "MERGING SERVICES BONJOUR BROWSER". Below the header is a tree view of devices. Under "RAVENNA Devices", "ZMAN" is expanded, and "ALP-AES67-CTT" is selected. The main content area shows the configuration for the selected device. It includes fields for "Device Name" (ALP-AES67-CTT), "Audio Configuration" (Sample rate: 48 kHz, Frame size: 48 smpl AES67(1ms)), "Session Sinks Global" (Safety Payout Delay: 0), "Network" (Multi-Interface mode: checked), "Interface 1" (Link: Up, Name: Primary, Type: DHCP, Address: 192.168.230.3, Netmask: 255.255.240.0, Gateway: 192.168.224.252, Use as Primary Gateway: checked), and "Interface 2" (Link: Up, Name: Secondary, Type: DHCP, Address: 192.168.55.48, Netmask: 255.255.255.0, Gateway: 192.168.55.254, Use as Primary Gateway: unchecked). The interface also shows the vendor "Digigram" and product "ALP card" with serial number "113138".

If more help is needed please send an email to support@digigram.com